

SWORD ELEVATOR

SWORD

HANGZHOU SWORD ELEVATOR CO.,LTD.

CONTENT

- 1. Brief Introduction of Hangzhou City***
- 2. Sword Factory***
- 3. Products & Performance***
- 4. Quality System***
- 5. Service System***
- 6. Major Overseas Achievements***
- 7. Dubai Branch Office Introduction***
- 8. Overseas Classic Project-Dubai Silicon Park***

1. Brief Introduction of Hangzhou City



- Capital city of Zhejiang province
- City population 9.5 Million.
- Land size 16600 square km.
- 200km from Shanghai.

1. Brief Introduction of Hangzhou City



- “Liangzhu” culture
4700 years ago.



- “Wuyue” culture
2500 years ago.



- Capital of China
900 years ago.

1. Brief Introduction of Hangzhou City



- *The most economically vigorous city in China.*
- *2016 G20 summit host city.*
- *2022 the Asian Games host city.*

CONTENT

1. Brief Introduction of Hangzhou City

2. Sword Factory

3. Products & Performance

4. Quality System

5. Service System

6. Major Overseas Achievements

7. Dubai Branch Office Introduction

8. Overseas Classic Project-Dubai Silicon Park

2. Sword Factory

- *Factory Area: 380,000 m².*
- *Investment: 81 million us dollars.*
- *Production capacity: 100,000 units/year.*
- *Testing tower: 120m rise.*
- *Employees: 3500+.*



2. Sword Factory

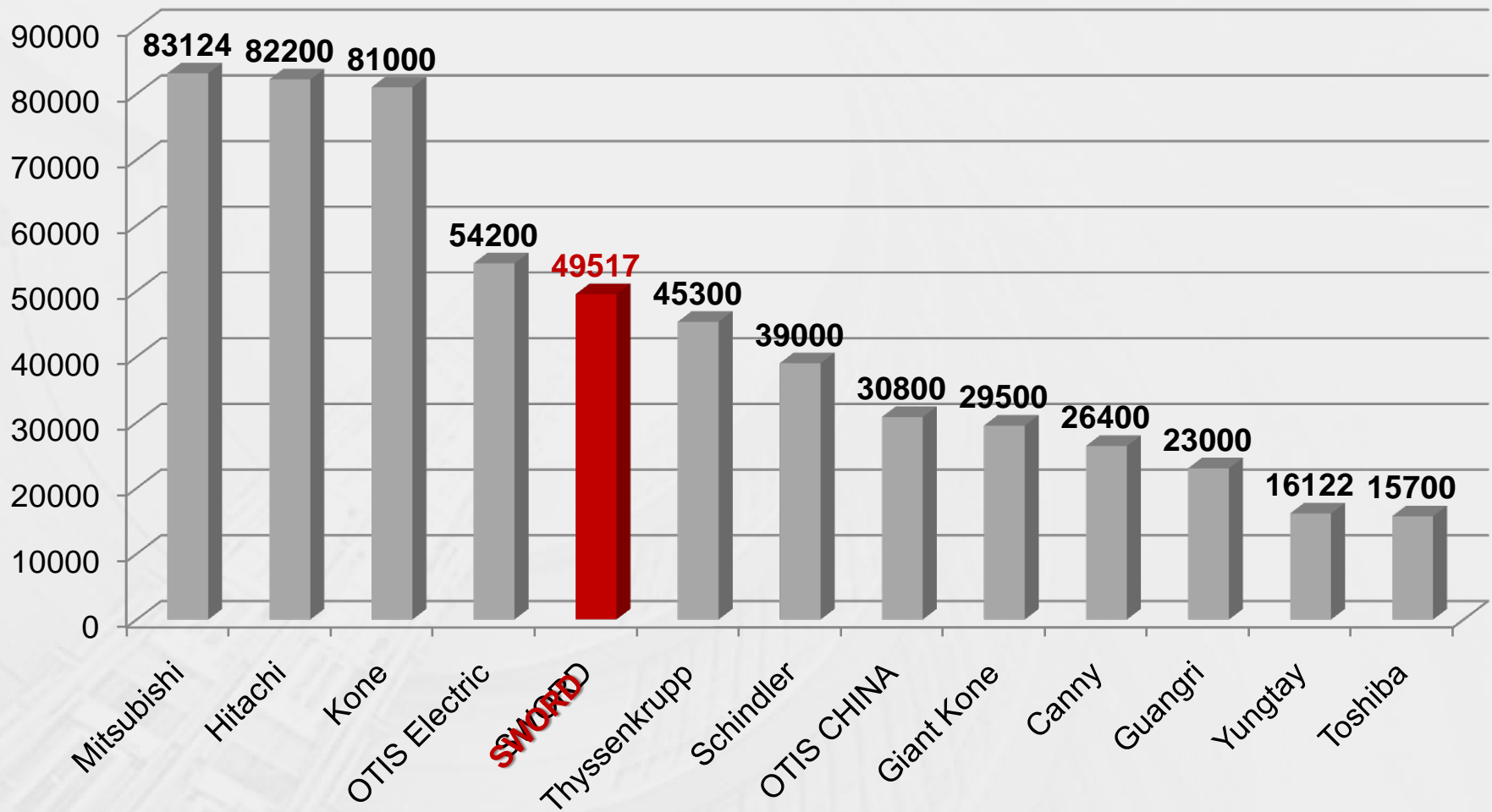
Building a "Smart Manufacturing Management Center" and striving to be the pioneer of China Manufacturing 2025;

Realize "production one piece flow" and create "management push-to-talk"

2. Sword Factory

2018 TOP13 SALES IN CHINA

Data from China Elevator Association(CEA)



2. Sword Factory



Elevator Factory (m^2): 70,000

Manufacturing Capacity (units/year): 90,000



2. Sword Factory



Escalator Factory (m^2): 50,000

Production Line: 6

Manufacturing Capacity (units/year): 10,000



2. Sword Factory



□ Fully Automatic Intelligent Sheet Line

- Automatic feeding
- Punching center
- Long side bending center
- Short side bending center
- Quadrilateral riveting robot

2. Sword Factory



□ **Salvagnini Flexible production line**

- Automatic feeding and laying-off
- Automatic shear center detection
- Automatic move and cutting
- Automatic flip
- Automatic bending center detection
- Automatic barcode, laying-off

2. Sword Factory



❑ **Welding Robots**

- *ABB welding robots from Swiss*
- *Welding tooling platform*
- *Built-in electric induction*
- *Sensing detection*

2. Sword Factory



❑ **Automatic Powder Spraying line**

- Double deck spraying line design, save space
- Humanized design, intelligent control operation
- Imported spraying room, precise control powder
- Silanization derusting, save energy and protect environment
- Frequency transmission chain, conveyor speed can be adjusted freely

2. Sword Factory



❑ **Commercial Escalator Production Line**

2. Sword Factory



❑ **Public Escalator Production Line**

2. Sword Factory



□ **Gantry Tooling Production Line**

National invention patent

Up and down head positioning

Up and down large brackets installation location

Glass clamp installation location

The guide installation location



□ **Noise Testing Room**

Depth 23.5m, Width 9m,

By Environmental protection building materials

Mute effect $\leq 55\text{db}$

2. Sword Factory



□ Electric Controller Center

Elevator controller

*Mount orderly tools, bright view,
Automatic simulation test, 100%
functions test.*

Escalator controller

*Materials be put in advance mode
Automatic simulation test, 100%
functions test.*

Human interface

*Front work platform, rear material
storage, reducing materials handing
time.*

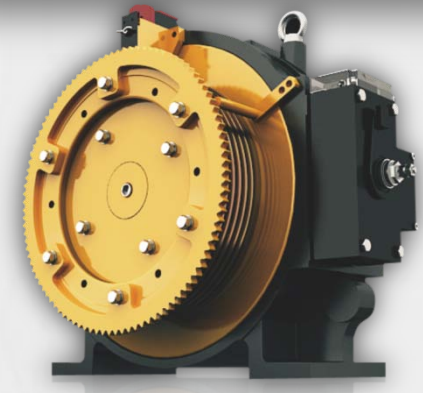
2. Sword Factory



□ Motor Manufacturing Center

World's largest gearless traction machine production base

*The global market share **20%***



2. Sword Factory



□ Door Operator Manufacturing Center

National grade laboratory

The most professional door system solution manufacturer in China

CONTENT

- 1. Brief Introduction of Hangzhou City***
- 2. Sword Factory***
- 3. Products & Performance***
- 4. Quality System***
- 5. Service System***
- 6. Major Overseas Achievements***
- 7. Dubai Branch Office Introduction***
- 8. Overseas Classic Project-Dubai Silicon Park***

3. Products & Performance

SWORD ELEVATOR

Manufacturing License

Class A

Elevators

Top speed 10m/s

Escalators

Vertical rise 42m

中华人民共和国
特种设备制造许可证
Manufacture License of Special Equipment
People's Republic of China

(电梯)

编号: TS2310532-2016

单位名称: 杭州斯沃德电梯有限公司
单位地址: 浙江省杭州市余杭经济开发区恒顺路 169 号
制造地址: 浙江省杭州市余杭经济开发区康达路 168 号

经审查, 获准从事下列电梯的制造:

| 类型 | 级别 | 型式 | 型号参数 |
|-------|----|-------|------------|
| 乘客电梯 | A | 曳引式客梯 | YHC2.0m/s |
| | A | 观光电梯 | YHC2.5m/s |
| | B | 液压电梯 | YHC2.5m/s |
| | A | 无机房客梯 | YHC1.75m/s |
| 载货电梯 | B | 曳引式货梯 | QC3000kg |
| 杂物电梯 | C | 杂物电梯 | QC300kg |
| 自动扶梯 | B | 自动扶梯 | BC26.4m |
| 自动人行道 | B | 自动人行道 | LC39.362m |

审批机关: 国家质量监督检验检疫总局 发证日期: 2012年12月2日
有效期至: 2016年3月1日 变更日期: 2013年12月11日

国家质量监督检验检疫总局制

中华人民共和国
特种设备安装改造维修许可证
Installation, Alteration, Repair & Maintenance License of Special Equipment
People's Republic of China

(电梯)

编号: TS33333332-2014

单位名称: 杭州西奥电梯有限公司
单位地址: 浙江省杭州市余杭区余杭经济开发区康达路 168 号

经审查, 获准从事下列类型电梯的安装、改造、维修:

| 类型 | 施工类别 | 级别 | 备注 |
|-----------------------------------|----------|----|----|
| 乘客电梯, 载货电梯 杂物电梯, 自动扶梯 自动人行道 | 安装、改造、维修 | A | |

审批机关: 浙江省质量技术监督局 发证机关: (公章)
有效期至: 2014年7月25日 发证日期: 2010年7月26日
变更日期: 2012年11月12日

国家质量监督检验检疫总局制

3. Products & Performance

SWORD ELEVATOR

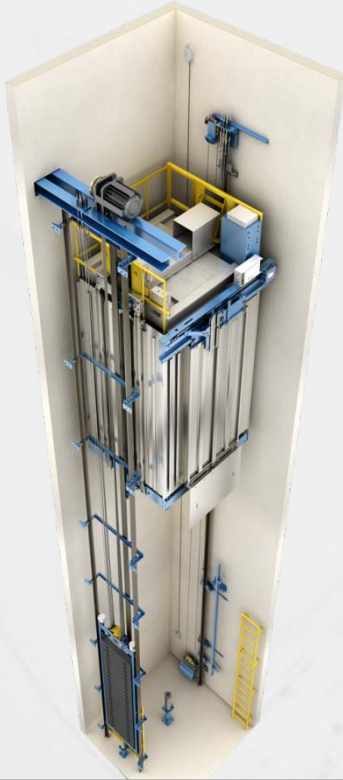


Small Machine Room Passenger Lift

| | |
|-------------|------------|
| Model Name: | S700P |
| Load: | 450-2000kg |
| Speed: | 1.0-2.5m/s |
| Max. Stops: | 36 |
| Max. Rise | 125m |

3. Products & Performance

Machine Roomless Passenger Lift



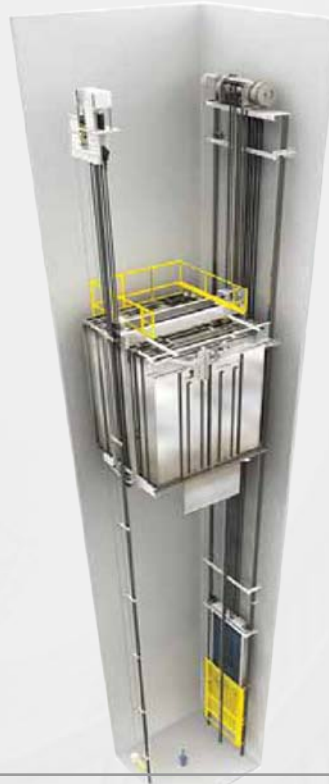
Model Name: S700L

Load: 450-2500kg

Speed: 1.0-2.0m/s

Max. Stops: 36

Max. Rise 105m



Model Name: WD800MRL

Load: 450-1600kg

Speed: 1.0-1.75m/s

Max. Stops: 32

Max. Rise 90m



Model Name: WD700MRL

Load: 450-1050kg

Speed: 1.0-1.75m/s

Max. Stops: 32

Max. Rise 90m

3. Products & Performance

Panoramic Lift

| | |
|--------------------|--------------|
| <i>Model Name:</i> | <i>S700G</i> |
|--------------------|--------------|

| | |
|--------------|--------------------|
| <i>Load:</i> | <i>1000-1600kg</i> |
|--------------|--------------------|

| | |
|---------------|--------------------|
| <i>Speed:</i> | <i>1.0-1.75m/s</i> |
|---------------|--------------------|

| | |
|--------------------|-----------|
| <i>Max. Stops:</i> | <i>32</i> |
|--------------------|-----------|

| | |
|------------------|------------|
| <i>Max. Rise</i> | <i>90m</i> |
|------------------|------------|

| | |
|-------------|-------------------------------|
| <i>Type</i> | <i>Square, round, rhombic</i> |
|-------------|-------------------------------|



3. Products & Performance



Home Lift

| | |
|-----------------------|---------------------------|
| <i>Model Name:</i> | <i>S800V</i> |
| <i>Load:</i> | <i>400kg</i> |
| <i>Speed:</i> | <i>0.4m/s</i> |
| <i>Max. Stops:</i> | <i>5</i> |
| <i>Max. Rise</i> | <i>18m</i> |
| <i>Power Required</i> | <i>Single phase 1.2kw</i> |

3. Products & Performance



Bed Lift (Hospital Lift)

| | |
|--------------------|--------------|
| <i>Model Name:</i> | <i>S700B</i> |
|--------------------|--------------|

| | |
|--------------|--------------------|
| <i>Load:</i> | <i>1600-2000kg</i> |
|--------------|--------------------|

| | |
|---------------|------------------|
| <i>Speed:</i> | <i>1-1.75m/s</i> |
|---------------|------------------|

| | |
|--------------------|-----------|
| <i>Max. Stops:</i> | <i>32</i> |
|--------------------|-----------|

| | |
|------------------|------------|
| <i>Max. Rise</i> | <i>90m</i> |
|------------------|------------|

3. Products & Performance



Freight Lift

| | |
|--------------------|--------------------|
| <i>Model Name:</i> | <i>S700F</i> |
| <i>Load:</i> | <i>1000-5000kg</i> |
| <i>Speed:</i> | <i>0.25-1.0m/s</i> |
| <i>Max. Stops:</i> | <i>16</i> |
| <i>Max. Rise</i> | <i>50m</i> |

3. Products & Performance

SWORD ELEVATOR



High Speed Lift

| | |
|--------------------|-------------------|
| <i>Model Name:</i> | <i>S800H</i> |
| <i>Load:</i> | <i>800-1600kg</i> |
| <i>Speed:</i> | <i>3-10m/s</i> |
| <i>Max. Stops:</i> | <i>80</i> |
| <i>Max. Rise</i> | <i>400m</i> |

3. Products & Performance

SWORD ELEVATOR

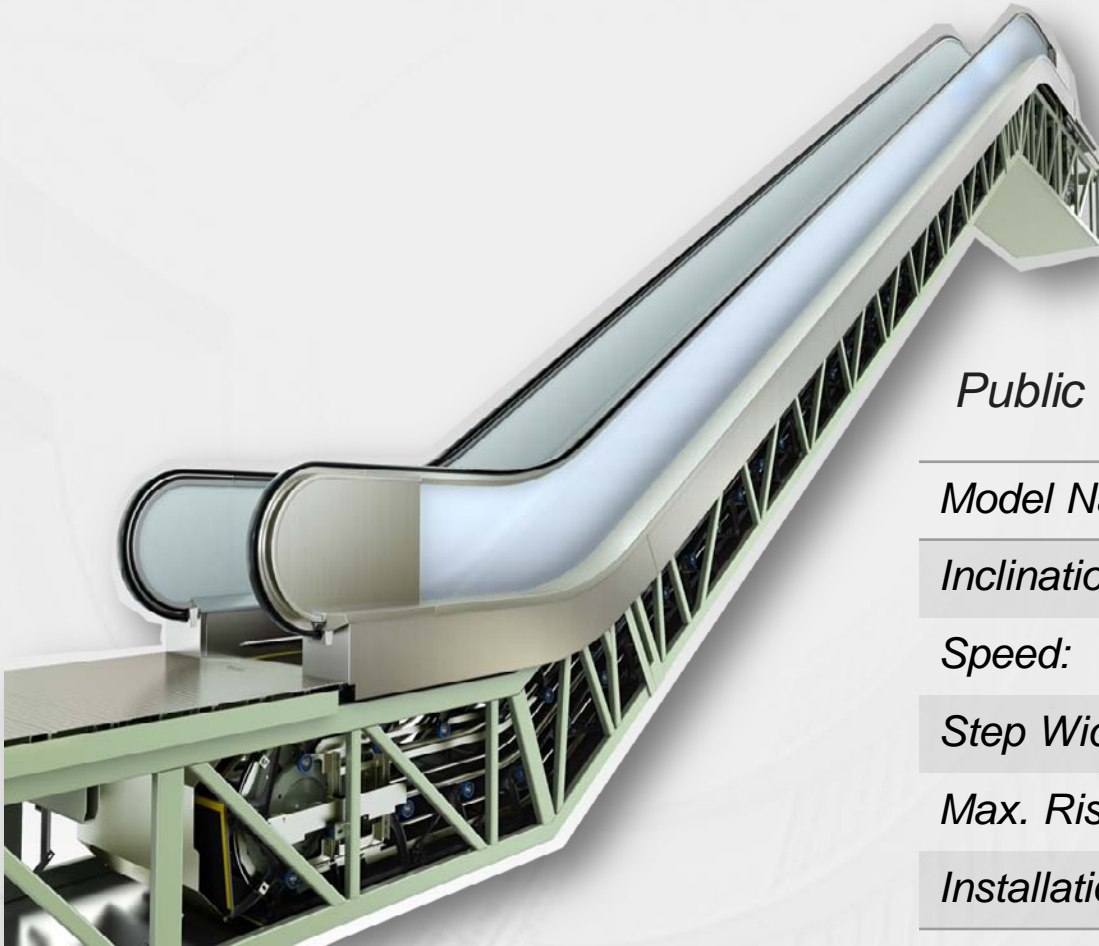


Commercial Escalator

| | |
|---------------------|-------------------------|
| <i>Model Name:</i> | <i>S900E</i> |
| <i>Inclination:</i> | <i>30°, 35°</i> |
| <i>Speed:</i> | <i>0.5m/s</i> |
| <i>Step Width:</i> | <i>600, 800, 1000mm</i> |
| <i>Max. Rise</i> | <i>11.5m</i> |
| <i>Installation</i> | <i>Indoor, Outdoor</i> |

3. Products & Performance

SWORD ELEVATOR



Public Escalator

| | |
|---------------------|--------------------------|
| <i>Model Name:</i> | <i>S900E</i> |
| <i>Inclination:</i> | <i>23.2°, 27.3°, 30°</i> |
| <i>Speed:</i> | <i>0.5, 0.65m/s</i> |
| <i>Step Width:</i> | <i>800mm, 1000mm</i> |
| <i>Max. Rise</i> | <i>42m</i> |
| <i>Installation</i> | <i>Indoor, Outdoor</i> |

3. Products & Performance

SWORD ELEVATOR



Moving Sidewalks

| | |
|---------------------|--------------------------|
| <i>Model Name:</i> | <i>S900T</i> |
| <i>Inclination:</i> | <i>0°, 10°, 11°, 12°</i> |
| <i>Speed:</i> | <i>0.5m/s</i> |
| <i>Step Width:</i> | <i>800, 1000mm</i> |
| <i>Max. Rise</i> | <i>8m</i> |
| <i>Installation</i> | <i>Indoor, Outdoor</i> |

CONTENT

- 1. Brief Introduction of Hangzhou City***
- 2. Sword Factory***
- 3. Products & Performance***
- 4. Quality System***
- 5. Service System***
- 6. Major Overseas Achievements***
- 7. Dubai Branch Office Introduction***
- 8. Overseas Classic Project-Dubai Silicon Park***

International Certificates



SWORD ELEVATOR

4. Quality System

SWORD award more than 100 technical patents / year, includes invention patents, design patents etc.



4. Quality System

SWORD ELEVATOR

ISO Certificates



■ ISO9001
Quality control system



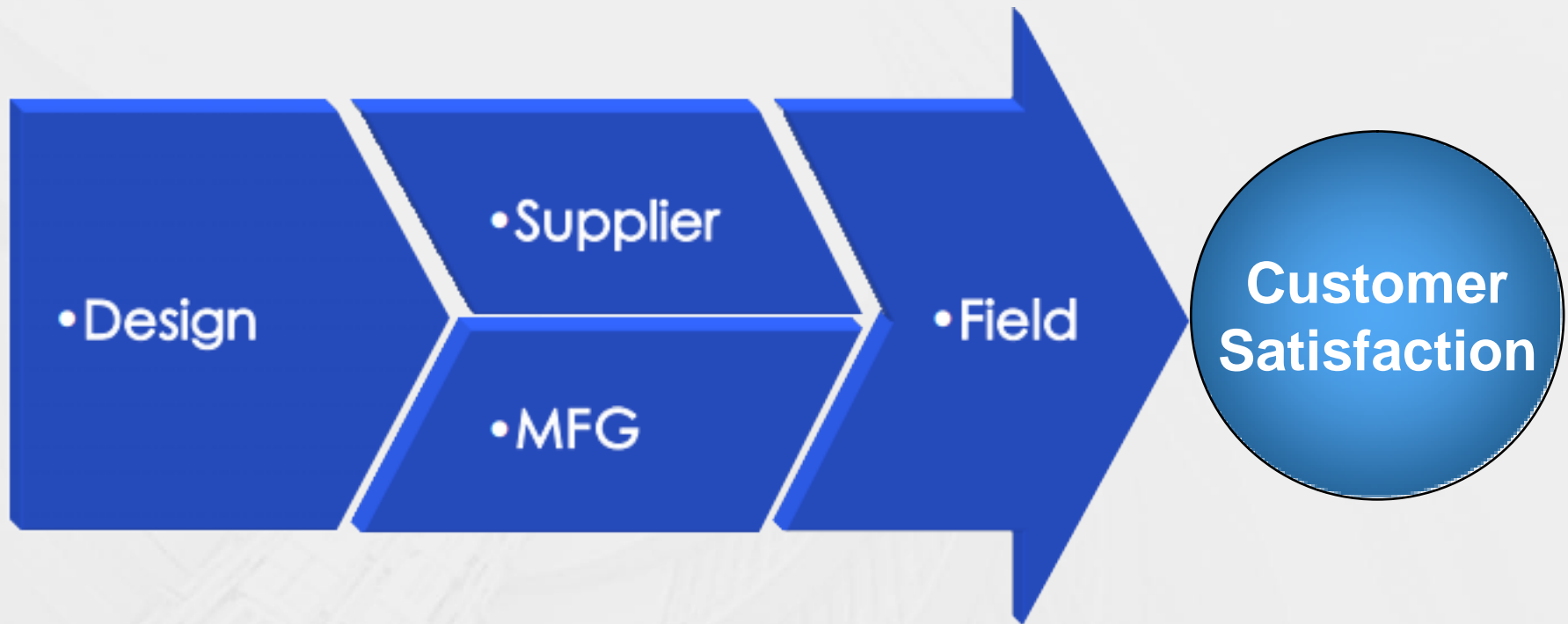
■ ISO14001
Environment control system



■ OHSMS18001
Occupational health and safety
management system

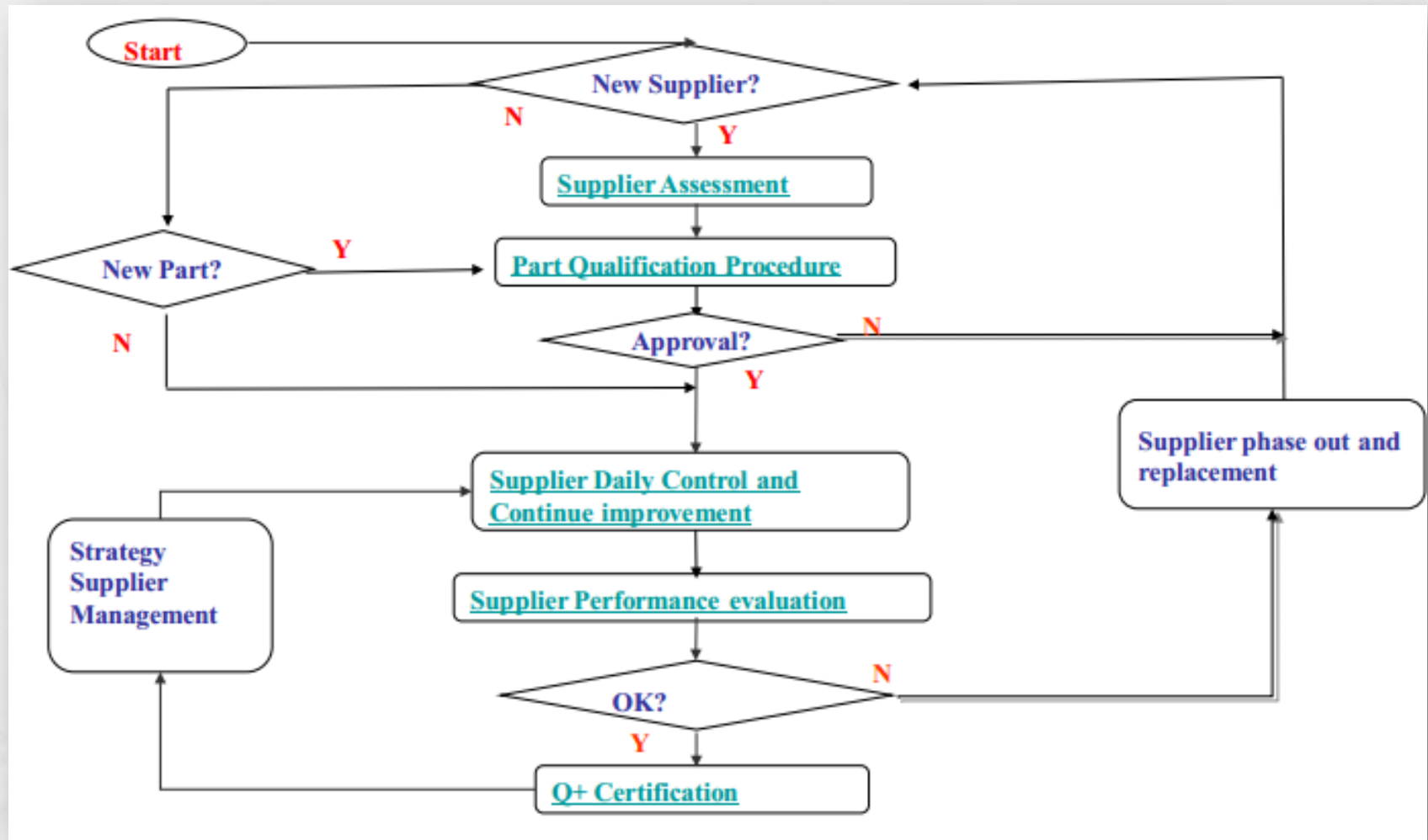
4. Quality System

SWORD ELEVATOR



4. Quality System

Outer source quality control



4. Quality System



Testing Center

- *Nationally certified*
- *Electrical Testing*
- *Mechanical Testing*

CONTENT

- 1. Brief Introduction of Hangzhou City***
- 2. Sword Factory***
- 3. Products & Performance***
- 4. Quality System***
- 5. Service System***
- 6. Major Overseas Achievements***
- 7. Dubai Branch Office Introduction***
- 8. Overseas Classic Project-Dubai Silicon Park***

5. Service System

SWORD ELEVATOR



Professional after-sales service

Professional and experienced service team, has extensive experience in after-sales services & maintenance to ensure adequate quality technical support and maintenance for our customer.

5. Service System

SWORD ELEVATOR



Professional training service

- *Staff training and examination system, engineering services, professional training*
- *Management advanced training*
- *Customer training*
- *Agent training*

5. Service System



■ Overseas agent engineers training

5. Service System

SWORD ELEVATOR



Spare parts supply

- 380 service sites, 50+ branch spare parts warehouse across country
- 5000m² warehouse area in Headquarter; 5000 kinds of elevator & escalator parts
- 24-hour service

5. Service System

SWORD ELEVATOR



Customer Call Center

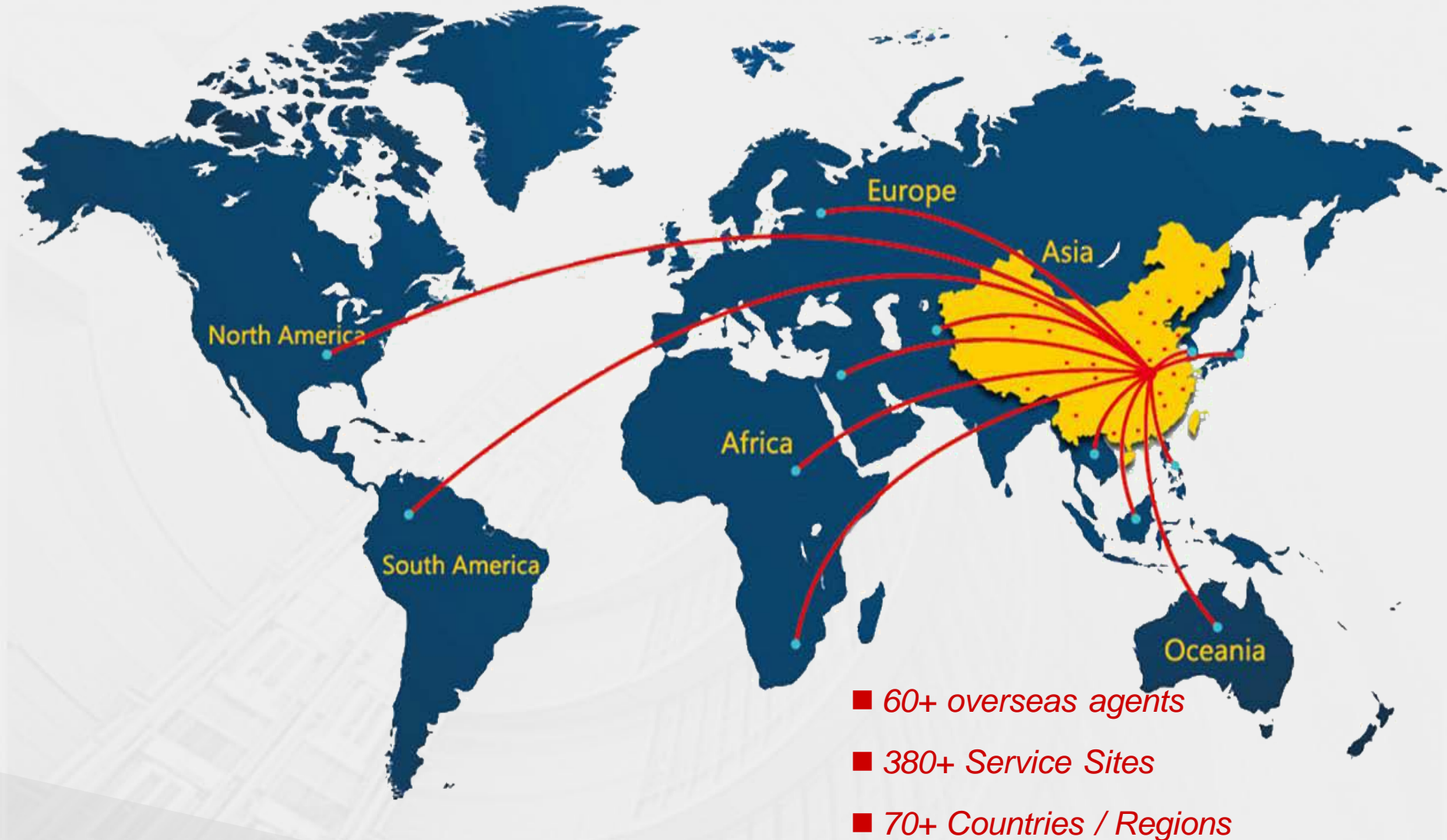
- *365Dx24H Service hotline*
- *Remote monitoring technology*
- *In-time network system*
- *Expert technical support*

CONTENT

- 1. Brief Introduction of Hangzhou City***
- 2. Sword Factory***
- 3. Products & Performance***
- 4. Quality System***
- 5. Service System***
- 6. Major Overseas Achievements***
- 7. Dubai Branch Office Introduction***
- 8. Overseas Classic Project-Dubai Silicon Park***

6. Major Overseas Achievement

Network for oversea sales & service



6. Major Overseas Achievement

- *Project Name: Jewel of the Creek*
- *Location: Dubai, UAE*
- *Units: 79*



6. Major Overseas Achievement

- *Project Name: Silicon Park*
- *Location: Dubai, UAE*
- *Units: 91*



6. Major Overseas Achievement

- *Project Name: Aloft Hotel & Element Apartment*
- *Location: Dubai, UAE*
- *Units: 18*



6. Major Overseas Achievement

- *Project Name: Bin Juma Residence Building*
- *Location: Dubai, UAE*
- *Units: 20*



6. Major Overseas Achievement

- *Project Name: Danga Bay*
- *Location: Johor Bahru, Malaysia*
- *Units: 52*



6. Major Overseas Achievement

- *Project Name: Forest city sales gallery, Fisherman's wharf*
- *Location: Johor Bahru, Malaysia*
- *Units: 19*



6. Major Overseas Achievement

- *Project Name: Prime Minister's Department*
- *Location: Kuala Lumpur, Malaysia*
- *Units: 38*



6. Major Overseas Achievement

- *Project Name: Northwest Railway Stations*
- *Location: Northwest, India*
- *Units: 27*



6. Major Overseas Achievement

- *Project Name: Seoul Subway Line 9*
- *Location: Seoul, South Korea*
- *Units: 108*



6. Major Overseas Achievement

- *Project Name: Daan Mogot City*
- *Location: Jakarta, Indonesia*
- *Units: 26*



6. Major Overseas Achievement

- *Project Name: Grand Mercure*
- *Location: Bali, Indonesia*
- *Units: 15*



6. Major Overseas Achievement

- *Project Name: Addis Ababa light rail*
- *Location: Addis Ababa, Ethiopia*
- *Units: 22*



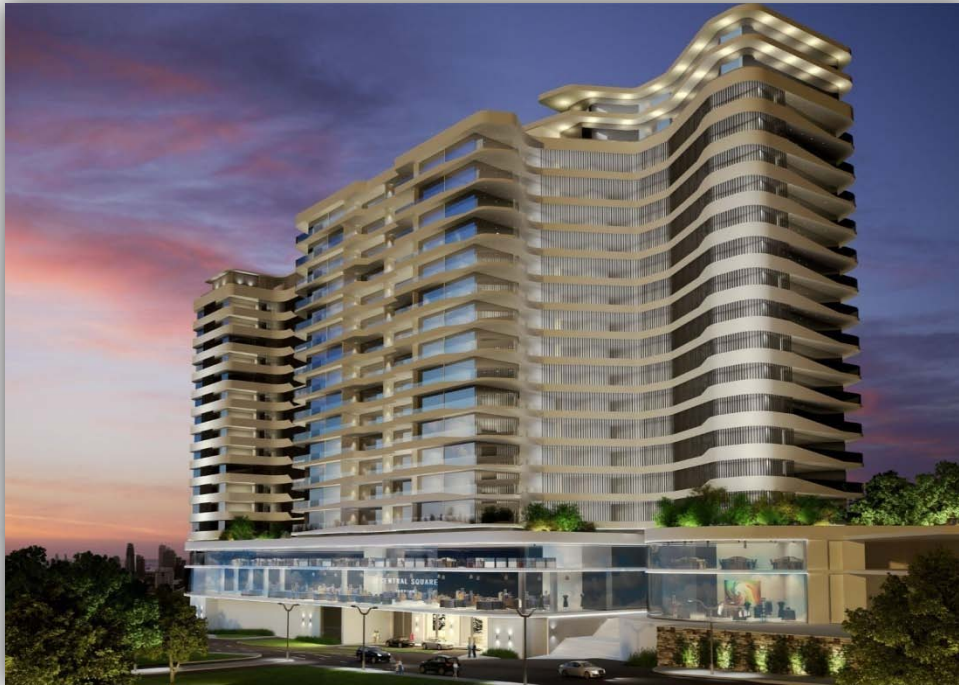
6. Major Overseas Achievement

- *Project Name: Zaisan*
- *Location: Ulaanbaatar, Mongolia*
- *Unit: 16 units passenger lifts, escalators*



6. Major Overseas Achievement

- *Project Name: Central-Square*
- *Location: Johannesburg, South Africa*
- *Unit: 12 units passenger lifts, escalators*



- *Project Name: Acsiopolis*
- *Location: Johannesburg, South Africa*
- *Unit: 22 units passenger lifts, escalators*

6. Major Overseas Achievement

- *Project name: TOP NADLAN*
- *Location: Tel Aviv*
- *Unit: 4 units 1350kg 4m/s 39/39/39*



- *Project name: Elite Tower*
- *Location: Tel Aviv*
- *Unit: 4 units 1275kg 4m/s 46/46/46*



6. Major Overseas Achievement

- *Project Name: Riderdge Mall*
- *Location: New York, USA*
- *Units: 8*

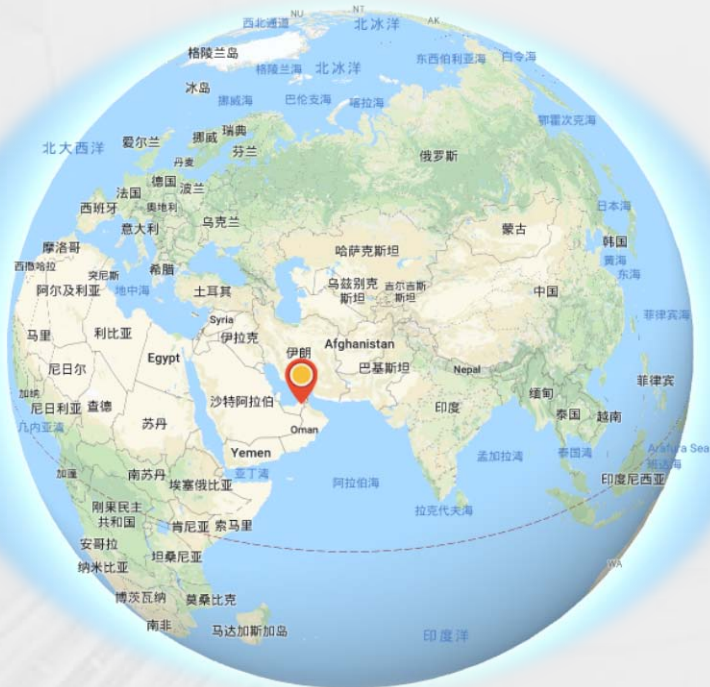


CONTENT

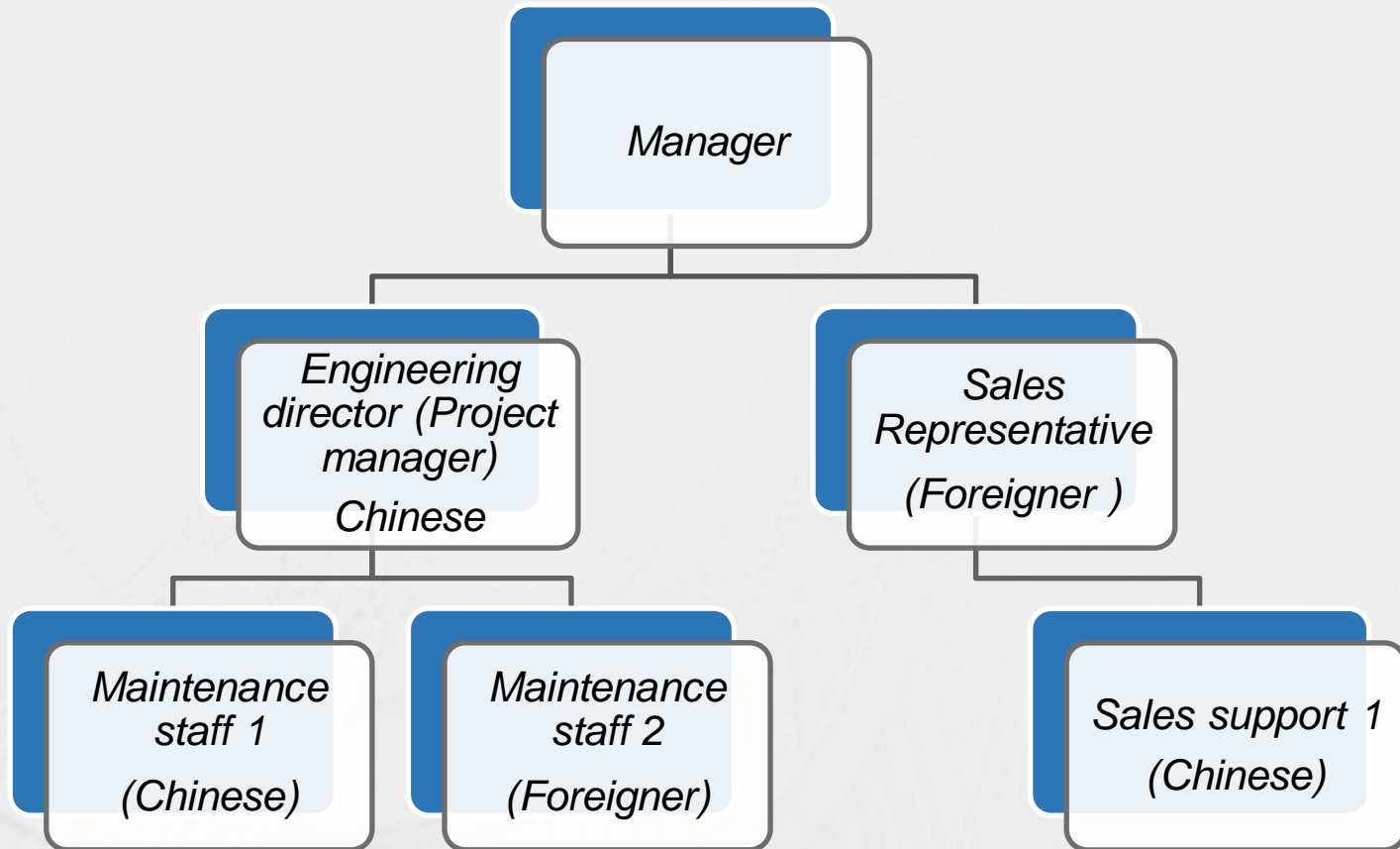
- 1. Brief Introduction of Hangzhou City***
- 2. Sword Factory***
- 3. Products & Performance***
- 4. Quality System***
- 5. Service System***
- 6. Major Overseas Achievements***
- 7. Dubai Branch Office Introduction***
- 8. Overseas Classic Project-Dubai Silicon Park***

7. Dubai Branch office location

- *Dubai Branch office registered in the Silicon Oasis Free Trade Zone in Dubai (Free Zone Establishment)*
- *Silicon Smart City, A6 Office Building, Room 305, 97.79 square meters*
- *Dubai located in the center of Asia, Africa and Europe, it is a transit point on three continents; Dubai has a small time difference between Africa and Europe. It can cover the business in Middle East and Africa through Dubai.*



7. Dubai Branch office structure



CONTENT

- 1. Brief Introduction of Hangzhou City***
- 2. Sword Factory***
- 3. Products & Performance***
- 4. Quality System***
- 5. Service System***
- 6. Major Overseas Achievements***
- 7. Dubai Branch Office Introduction***
- 8. Overseas Classic Project-Dubai Silicon Park***

8. Silicon project introduction

- *Silicon Park Smart City– Dubai, UAE 91 units elevators and escalators*
- *Main contactor : China Construction Middle East Company*
- *Consultant : DESIGN & ARCHITECTURE BUREAU (DAR)*
- *Nature : Dubai Government Project, total investment 1.2billion US dollars*
- *Start: Sep. 2016 Finish: April, 2019*



8. Silicon park-Opening ceremony



February 27, 2017, Chinese Consul General in Dubai Li Lingbing attended the opening ceremony.



February 27, 2017, Dubai Chief, Sheikh Mohammed, Bin Rashid Al Maktoum attended the opening ceremony

8. Silicon park-Elevator contract signing ceremony

April 2nd, 2017, Silicon park elevator contract signing ceremony



8. Silicon park-Project management



- *The Project manager guide the installation guys to stock the escalator and wooden cases in designated place*



8. Silicon park-Staff safety training



- *The project owner and consultant visit the jobsite and study the safety regulations.*

- *The project owner and consultant study the project safety regulation and intelligence control plan*



8. Silicon park-Project photo



Thank You!